



WAKE, Inc. presents -

The HardTrack System monitoring concrete maturity

- * Our information indicates you are already convinced that using Concrete Maturity is the way to go.
- * Let's look at what might happen if you upgrade to "first class", to our **HardTrack** system.
- * The upgrade is not expensive, it will save you money and give you much more bang for the buck.

By upgrading to HardTrack, you will find that it offers -

Greater Flexibility
Wireless Capability
Increased Mobility
Rapid Collectibility

The use of our **HardTrack** System will allow you to collect your data by using RFID rather than having to use all of those wires.

It eliminates the need for all of those cumbersome tangled wires you have to use with your current system. Sort of makes it difficult doesn't it?

HardTrack uses RFID (Radio Frequency Identification) which allows us to communicate between a portable transceiver and our RFID transponder (called a tag) which is buried in your concrete.

We use the iQ32T tag which has the capability to capture the ambient temperature of the concrete it is buried in and to communicate the information to the portable.

Using **HardTrack**, you will have all of the information you need at your fingertips, both at the job site as well as in your achieved records.

All time and temperature data is maintained in our RFID Tag's 32K of memory. We import all of the data into our portable for the maturity calculation, then can send it on to the PC for posterity.

HardTrack offers much greater flexibility in retrieving data and calculating the maturity of your concrete.

We offer access to the full database at the work site, it is available if needed. See the reverse side of this brochure to view the real time data.

The WorkAbout Pro by Psion-Teklogix



The "Pro" is the handheld we now recommend for use with **HardTrack**. It weighs about 18 oz, with a hand strap. This "tough little dude" is very user friendly.

The ruggedness of this portable, handheld computer is amazing. It is designed to work in the environment you use it. In rain, dust, hot or cold and to take multiple four foot drops to concrete (the hard kind).

The "Pro" uses MS CE.Net as its operating system. A color screen is available but we recommend a mono screen, as it is sunlight

readable. A quick connection and you're hooked up to your PC ready to download your information and to re-charge its battery.

The display is a Touch Screen, it comes standard with 64 MB of Flash and 64 MB of RAM. Its processor is a 400MHz Intel Scale PXA255. Your "Pro" will come loaded with all of the RFID communication software you need and the HardTrack application software, plus the AC Power cord, battery charger and a USB connection to the PC.

It is the toughest portable we have tested to date!

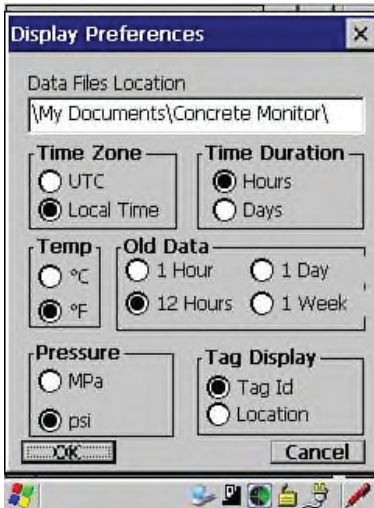
See what is possible with HardTrack!



An engineer using **HardTrack** is checking out one of the buried RFID tags from his pickup. The robustness of our iQ32T RFID tag allows him to do this.

Look - No wires!

Sample HardTrack Screens Show Flexibility



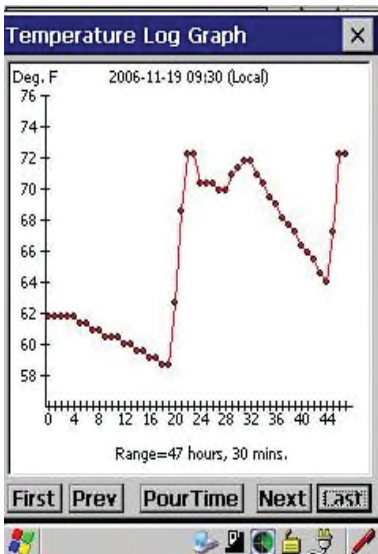
Some of the available preferences to be used for display screen.



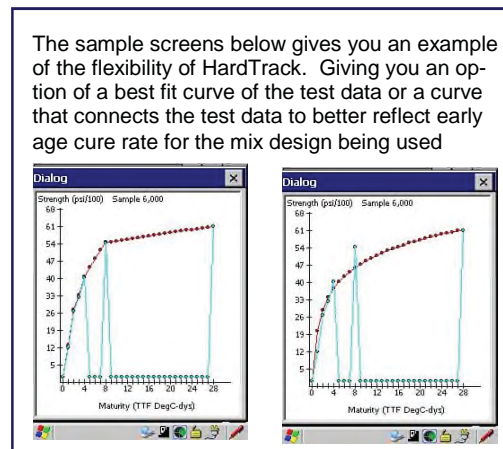
Awarded because it significantly improved construction quality and costs.



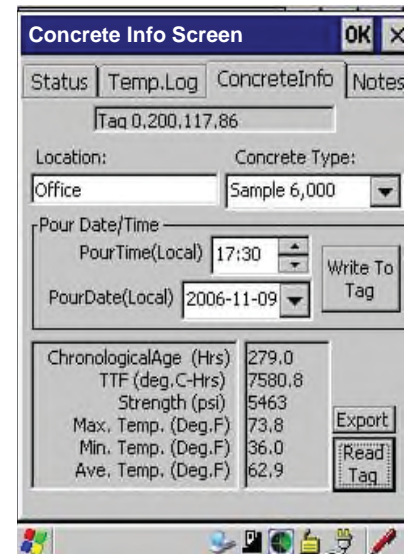
This screen provides detailed view of the temperature log for the selected tag.



Displays a visual of the temperature log, 48 logging intervals at a time.



The sample screens below gives you an example of the flexibility of HardTrack. Giving you an option of a best fit curve of the test data or a curve that connects the test data to better reflect early age cure rate for the mix design being used



HardTrack calculates and displays the current age, TTF and the strength of the concrete, plus the minimum, maximum, and average temperatures.



The iQ32T RFID Transponder (Tag)

The Tag when buried within the concrete is still able to transmit its signal through the concrete. It does not require you to make any hook ups to wires

The "Pro"



The HardTrack Portable



The iQ32TE Tag With A Temperature Probe

When you are making those deep pours, we can offer you the combination of our tag with a stainless steel temperature probe, you will still have the RFID capability, but can now go as deep as you wish.